

# Images



## BAA AND GAINANS "ART OF CELEBRATION" – FIVE YEARS September 17 - 18

Has it been that long? In looking over notes from previous years, it occurred to me '2010 will be the 5<sup>th</sup> year that BAA has partnered with Gainans in Sept. for our "Fall Festival of Art Show." The first couple of years we did partner with the Billings Flower Club, but with increasing participation from our own members, both Gainans and BAA have enjoyed a long-term relationship that the local community has supported.

With this five-year celebration, several ideas on expanding this show were suggested at a meeting with Mick Gainan on July 29<sup>th</sup>. In addition to the artwork, have members decorate a "gourd birdhouse" that would be displayed at different Gainan locations and Galleries. The Theme, "The Birds & The Bees". We have received lots of excitement and interest from our artists on this project.

This show is fun, so let's enjoy this milestone celebration with enthusiasm and involvement from our members in making this a Special Event!

Lana Bittner./Fine Arts Chair

For add'l info on the guidelines for Show & Gourd Birdhouse see inside newsletter.



### BAA ANNUAL FALL SHOW BILLINGS FOOD BANK OCTOBER 1 - ARTWALK

Plans are still being made for the BAA Annual Fall Show. After visiting 5 different venues we decided that this year we would try the new Billings Food Bank on 4th Avenue for the October Artwalk, It has a large space to show the art work and we will be able to leave it on display for a week. Members will be able to display 2 pieces of art. Cost will be \$5 per art piece and artist must provide easels for the art as we will not be able to hang from the walls. There will be tables available.

The Food Bank will receive 15% of the sales price, 5% will go toward our Art Grant, 80% to artists. The \$5 fee will go toward the ribbons, juror and any extra expenses. E-Mail and the calling committee will give you more information the middle of September. Information will also be available at the Gainans Show. or by calling Sue Hammersmark at 656-7529 or Madelein Bladow at 256-6124.



APRIL 2010

In this Issue...

#### PAGE 1

Gainans Garden Show  
September 17–18

BAA Fall Show  
October 1—Artwalk

#### PAGE 2 - Coming Events

Gainans Show - Info  
Lance Johnston—Watercolor  
Workshop

#### PAGE 3 - Past Events

Board Meeting  
CTA Silent Auction  
Elks Club-Spring Banquet  
Phil Bell Web Page

#### Page 4

Information  
Framing by Fred  
Frame Hut Framing discount  
Wyoming Watercolor Show  
Carbon County—Aug calendar  
BAA Web Page

#### PAGE 5

Information and pictures from  
Paint-out  
Wanted—apartment /studio  
YAM Consignments

#### PAGE 6

\*\*\*WRITERS ???  
Labels - Art Appraiser  
Art Classes & Workshops

#### PAGE 7

Gallery information  
Membership application

#### Treasurers Report

Balance is \$4526.48  
including CD  
Aug. 4, 2010



Mary Knapp—  
Fused Glass  
piece—  
Sandstone  
Gallery

# COMING EVENTS

## "Art of Celebration" BAA & Gainans



### Artwork:

Show Date, Sept. 17<sup>th</sup> & 18<sup>th</sup>, Hours: 10:00-5:00 Friday & Sat. – Date Setup Thursday, Sept 16<sup>th</sup>, (11:00-3:00) No Theme for Artwork. 2 pieces of artwork/artist, Entry Fee = \$5.00 (This charge will help with publicity and ribbon expense) Ribbons will be awarded for 1<sup>st</sup> & 2<sup>nd</sup> place in the medium of: watercolor, oil, pastel, acrylic and photography, sculpture. Judging will be done after 3:00 on Thurs., so artwork delivered after that time will not be included for awards.

We will have demos on both Friday & Sat., plus a Quick Draw on Sat. afternoon at 1:30, demos will be scheduled at 10:30 on Friday and Saturday. Will need artists to volunteer and also donate a couple of prints for raffle give-a-way. Note: We encourage members to leave artwork until end of show on Saturday. At the time of check-in we will ask members to help out for an hour or two during the two-day show.

The sale of artwork will be split: Artists – 80% - Gainans – 15% - BAA – 5%. The comments we have had from this show, are on the quality of BAA artwork and the Gainans location. A portion of the funds will help benefit our Art Grant Fundraiser.

### Gourd Birdhouses – “ The Birds and the Bees”

This feature came from an idea at a meeting with Mick Gainan on July 30<sup>th</sup> on how we could expand this five-year celebration event. Have the artists create a birdhouse from different style gourds. The response has been great with 20 gourds requested and ordered. A “Best of Gourd Award” will be given. Hopefully, we can display early at some of the Gainans locations, and other Galleries. Gainans will give BAA 100% of sales for the two-day show fundraiser, and 20% thereafter. The cost of the gourds will be from \$5.00- \$8:00, depending on the style. We will contact the members when the gourds come in. NOTE: The only requirement on decorating will be to insert a BEE somewhere on the Birdhouse!! Each participant will price their birdhouse, but should not exceed \$30.00. We will also provide Gainans with an inventory list for the sales. This should be fun, and if you have questions, call Lana (259-7470) Thanks. \*\* *IF you finish your gourds early, they can be displayed at Gainans before the show.*

## The Montana Watercolor Outfit

INVITES YOU TO A FOUR DAY - WATERCOLOR WORKSHOP “CAPTURING MONTANA’S BEAUTY”

With — **Lance Johnson**

Sponsored by and held at **Montana State University-Billings**

Explore the tremendous range and beauty that watercolor gives us. Learn a wide variety of techniques that can be used to expand horizons and develop confidence in your art. Each class will include demos that guide you through the process and encouragement in your own use of colors and uniqueness. You will learn to work with aqua board and watercolor board. Students will combine abstract with realism while completing explosive washes and realistic subject matter. You may do high country waterfalls and Montana Homesteads. Expect plenty of time to paint with guidance and hands on help from the instructor. Each day will end with a constructive critique. Tuition is \$175.00 for the four days.

Tuition includes daily instruction, complimentary snacks and beverages each morning, and a get acquainted party with hors d'oeuvres and beverages. A \$50.00 deposit will hold a spot for you in the workshop or you may send the whole amount at once if you prefer. The remainder is due September 7, 2010. Please make checks payable to Montana Watercolor Outfit.

Students are accepted into the workshop in the order that deposits are received. Space is limited. Cancellations: Tuition is fully refundable minus a \$15.00 service fee up to September 7, 2010. After that there will be no refunds unless your spot can be filled from the waiting list.

Questions? Call Lou Lynn at (406) 259-6400 (1106 Poly Drive-Billings, MT 59102) OR Madelein Bladow at (406) 256-6124 (dbladd1@aol.com)

Please detach and include with your registration fee.

Please reserve a spot for me at the Lance Johnson Watercolor workshop in Billings, MT from October 4-7, 2010.

Enclosed is my check for \$\_\_\_\_\_ (Make check payable to Montana Watercolor Outfit )

Send to Lou Lynn -1106 Poly Drive-Billings, MT 59102)

Name \_\_\_\_\_ Street Address \_\_\_\_\_

City \_\_\_\_\_ State \_\_\_\_\_ Zip \_\_\_\_\_ Phone \_\_\_\_\_

# PAST EVENTS

## BILLINGS ARTS ASSOCIATION

**BOARD MEETING – Sandstone Gallery  
AUGUST 4, 2010**

Members present at the Board Meeting were Sue, Eva, Lana and Karin. New members of the steering committee attending were Dan & Becky Burns and Mary Knapp. Members not present were Madelein Bladow and Jeanette Magsteadt. Jerry Rowe is also a new member.

Lana presented the members of the board with a summary of the May Banquet. (below)

Treasurers Report: Eva reported that we have \$4,526.48 the treasury which includes the \$1,500.00 in the CD.

New Business: 5th FALL GARDEN SHOW – AT GAINANS - Lana went over the schedule for the fall garden show. The date will be September 17 & 18th Members will exhibit up to 2 pieces of art - Cost \$5. This year will be the 5th year we have had a fall show at Gainans and we will celebrate with the paintings of gourds—titled - 'THE BIRDS AND THE BEES' The gourds will be bird houses and will have to have a bee on it somewhere. Members will buy the gourds, paint them and Price them no higher than \$30. Proceeds will go toward the BAA Grant. The Artwork will be a juried for 1st and 2nd place in the different categories. Delivery of art work and gourds will be September 16 from 11 to 3.



Yupo Painting by  
Madelein Bladow

BAA FALL SHOW Billings Food Bank on 4th Ave during the October 1st ARTWALK .  
Details pending...Meeting adjourned.  
Respectively: Lana Bittner and Sue Hammersmark

### **BAA Silent Auction- CTA Artwalk '2010 1<sup>st</sup> & 3<sup>rd</sup> year success**

I just wanted to share some comparable numbers with the completion of our 3<sup>rd</sup> annual Silent Auction held during the May 7<sup>th</sup> Artwalk at CTA Engineers and extending once again through July.

Artwork has averaged around 60 pieces for the three years and members participating 32; (The economy continues as a negative, as reflected in dollar sales)

1<sup>st</sup> year: Sales totaled \$2,985.00(less artwork sold, higher dollar amount;

2<sup>nd</sup> year: Sales Totaled \$ 525.00(two sales made in July after Auction);

3<sup>rd</sup> year: Sales Totaled \$1,407.00(more artwork sold, less dollar amount).

Amount Paid to Artists: \$1,055.25 - BAA Grant: \$351.75  
Note: (funds paid –out for entertainment and publicity)

The entertainment from the "Youth Symphony" at Alberta Bair added to the social atmosphere of the auction, with positive comments expressed from the CTA Staff and public.

Thanks to Linda Duncan for a terrific job with publicity!

We have some ideas on how we can promote and expand this event/raiser and will share at a later date.

The success and outcome of this auction depends on participation from our members and thanks to all of your efforts.

CTA has scheduled BAA for the May Artwalk in 2011!

Congrats to members who sold artwork: Gary Beeler, Dan Burns, Jeanine Deiling, Bonnie Eldredge, Mary Hopper, Kody Johnson, Mary Knapp, Leo Olson, Louise Payovich, Victoria Wetsch, Jolene Yellowrobe.

Lana Bittner-Fine Arts Chair

**Check out Phil Bell's web page at  
[WWW.PHILBELLPHOTOGRAPHY.COM](http://WWW.PHILBELLPHOTOGRAPHY.COM)**

### **Billings Arts Association – Elks Club- June 17<sup>th</sup> 2010 BAA Banquet**

#### SUMMARY & NOTES:

From my notes, we had around 32 attending the Banquet, members plus spouses.

Madelein & Sue called meeting to order and welcomed new and old guests. Members were also reminded to vote during the break for the "Peoples Choice Award", with Eva Morganthaler winning for her artwork. (There were 17 entries)

Linda Duncan was thanked for her many years serving as the BAA Treasurer and also a thank-you to Bonnie Eldredge for taking the reservation calls for the Banquet.

Members were introduced who volunteered to serve on BAA Steering Committee: Dan and Becky Burns, Mary Knapp, Jeanette Magstadt, Gerri Rowe – All were voted and approved

Lana gave report on the Silent Auction during Artwalk at CTA, and gave some comparable number for the three years of the auction. We had 1<sup>st</sup> and 3<sup>rd</sup> year successes, plus a report was given to Sue for August newsletter outlining the three years.

Gainans Show- This will be our 5<sup>th</sup> year and will be held in Sept. Meeting w/ Mick Gainan & Lana on July 30<sup>th</sup>.

Fall Show: Sue working on locations for show. Food Bank possible

Glenda Ramsey and former member now living in Florida provided the entertainment. She plays the guitar and sang songs that she wrote and some that she felt that we would enjoy. Thank you Glenda— Great Job.

Four door prizes were given to members and meeting adjourned.

Lana Bittner/Secretary, Fine Arts Chair

# Information

## **FRAMING BY FRED**

**Fred Magers, a member of BAA will frame your Art Work at his Frame Studio at 1245 Rimrock Road. Contact him at 245-6733**

**\*\*\*Fred does an excellent job of framing usual and unusual pieces of art. Please give him a try.**

The Frame Hut & Gallery  
1430 Grand Ave.  
Billings, MT 59102  
406-245-9728  
Open M-F 9-6, Sat. 10-5

The Frame Hut offers a 20% discount on custom framing and a 25% discount on ready made frames to artists framing their own work. The store carries a large selection of ready made frames in sizes from 8 X 10 to 30 X 40. During the month of May ready made frames will be on sale to artists for 35% off the regular price.

**WEB PAGE** [www.BillingsArtsAssociation.com](http://www.BillingsArtsAssociation.com) Our website is up and running. If you have not visited the site check it out.. Jeanne is ready to put your photos on the site if you have a digital camera and know how to send photos. I asked Jeanne what she would need to add your art to the site and following is her reply. If you are not a computer person or don't have a digital camera we will help you by taking photos for you at the next art show.

## **WYOMING WATERCOLOR SOCIETY**

**CONTACT:** Karen Myers 307-673-0067 ext. 219 / or  
[www.artinsheridan@hotmail.com](mailto:www.artinsheridan@hotmail.com)

**LOCATION:** SAGE Exhibit Gallery – 171 N. Main Street – Sheridan, WY.

Wyoming Watercolor Society (WYWS) will host the Watercolor Wyoming 25th Annual National Exhibition in Sheridan, WY August 2nd through August 31st. Please join in the opening reception on Thursday, August 19th from 5-7pm at the SAGE Exhibit Gallery in Sheridan College Main Street located at 171 N. Main Street, Sheridan, Wyoming.

WYWS has hosted both an Annual National Show and Watercolor Workshop in the state of Wyoming for the past 25 years. The workshop instructors are nationally known and have brought abstract, realism and experimental watercolor styles to the participants. Students attending have represented states across the nation traveling as far away as Canada, Alaska, California and Florida.

Artists are juried into each years show and compete for prize money, national recognition, and a chance to gain signature membership status. WYWS supplies a format for artists to learn, compete and have fun. This year WYWS is showcasing 47 paintings done by 34 artists from 14 states.

Lian Zhen from Reno, Nevada will teach a 4-day workshop August 18th through August 21st at the Historic Train Depot located at 201 East 5<sup>th</sup> Street in Sheridan. One space is still available for the workshop. For more information please call Karen Myers at 673-0067 ext. 219, or 751-6411.

## **CARBON COUNTY ART GUILD—RED LODGE**

Aug 1-31: Susan Spero and Dorci Newman Tremblay Exhibit. Enjoy the artwork of these 2 Red Lodge plein air oil painters in the Main Depot Gallery during August. The exhibit is free and open to all during normal Arts Guild hours, Monday-Saturday, 10-5 and Sunday, 12-5. For more information, call the Arts Guild in Red Lodge at (406) 446-1370.

Aug 1-31: The Photographs of Shawn Stewart. In the Workshop Gallery during August. For more information, call the Arts Guild in Red Lodge at (406) 446-1370.

Aug 2-31: The Photographs of Anne Laird. In the Workshop Gallery during August. For more information, call the Arts Guild in Red Lodge at (406) 446-1370.

Aug 14: Pen and Ink Pointillism with Pat Schermerhorn. Learn the technique of using dots and color to create a painting. 10-2pm. For more information, call the Arts Guild in Red Lodge at (406) 446-1370.

Aug 21: Plein Air Painting with Dorci Newman Tremblay and Sue Spero. Spend a day painting outside with two of the Guild's best plein air painters. Work in oils or acrylics in an outdoor location here in the Beartooth Mountains. Workshop is for ages 17 and above. All talent levels welcome. 8:45-3pm. For more information, call the Arts Guild in Red Lodge at (406) 446-1370.

# Paint-out update

## PAINT-OUT AT KLEIN, MONTANA

Update on the Billings Arts Association, Klein, MT paint-out June 19th. (Klein is about 5 miles Billings side of Roundup, MT. We had a great paintout at Klein even though it was just Louise Payovich and me (and my husband went along). First, we drove over to the old Milwaukee coal mine site because it has great old building, foundations, scenery, junk, mushrooms, flowers, rockdogs, etc. Also, I could tell that the very tall sturdy grass in the next meadow was original Buffalo Grass, however, it's official name is Wild Canadian Rye Grass and it is virgin to where it is growing. What a treat to see real Buffalo Grass still growing in Montana. We walked around a long time, took lots of pictures, which I will email later.



As we were getting ready to leave along came the Churchill Family. Got to talking and come to find out, my husband's family members owned the mine property around the late 40's 50's 60's. Joe Spear and then Muriel Spear formally owned the property until about the 80's I think. My husband is Bob Spear, Joe and Muriel's nephew. We were so excited to get the chance to visit with the Churchill's. Some of you may know their daughter Alana, an artist who lives in Columbus. We knew Muriel lived 'at Roundup'. We knew that Joe ran hogs in the old mine during the late 50's and early 60's. We were always told that Joe was a hermit. However, in visiting with the Churchill's we found out that both Joe and Muriel had some really good friends and were very active people. It was like a gift to Bob to know about that part of his family. Then we went over to the shanties, homes built right into the rock face of the hillside. Louise and I got the chance to paint a little. There we met a Mr. Erbie (spelling) that used to own a jewelry store in Roundup. He came down the road in his Model A. According to Mr. Erbie, a Dominic Finney (again, spelling) actually built the shanties. What a cutie. He was so sweet and visity.



Louise headed back to town at 4:00 ish. Bob and I looked at the map and decided to come back to Billings by going on Horse Thief Road to Red Hill Rd. to Emery, Franklin and Rygate (then into Acton and Billings). However, that's not what we did do. When we got to where Red Hill Road T's south to Rygate/north to the Snowy Mountains, we decided to go north through the Snowys. What a beautiful/bountiful view. We saw an elk, lots of deer, unending scenery, snow, rain, mud, emerald green meadows, and had great roads. Leaving Lewistown, heading to Grass Range, just as we approach Grass Range, we blew an inside dual-tire. But again, God was riding with us, as we just pulled into the bar/cafe/camp parking lot there in Grass Range, changed the tire, filled up with air, and we're on our way to Billings. We arrived back to Billings at 11:30 pm, but had a very fun day.

Jo Firm's husband's people managed the Milwaukee Coal Mine, probably in the earlier 1900's to 1930-40ish. Jo has offered to send me a map and papers with further information about the area and the families. I am looking forward to seeing that on the Klein area and will share them with other BAA members that might be interested.. Only thing, we sincerely wished you could have been there with us.



Louise, Linda, Bob and Sophie

LINDA WILL TRY TO SCHEDULE A PAINT-OUT IN SEPTEMBER—WILL E-MAIL

### WANTED APARTMENT AND STUDIO SPACE

Sue Mathes is looking for a studio to work out of that also has a small living space or even a house. Could even share a space with another artist. Call 698-5360 for more information...  
sbrnsdrf725@gmail.com

### YELLOWSTONE ART MUSEUM CONSIGNMENTS

If you have a piece of art that you feel you would like to put in the YAM on consignment contact Jet Holoubek at the YAM on Sat. Sun or Tue. and he will fill you in on the procedure. They will be accepting art through a juried process so you will have to submit photographs, a CD or if small the art itself for acceptance. 256-6804

Check out the New Exhibits and the Vault...  
at the YAM.....

Art Booth Farmers Market - Babcock Arcade

**WRITERS**  
*The Writers*  
*Where are you? Do we have a writers group that is meeting somewhere. Please let the newsletter editor know.*

**ELLIOTT EATON STUDIO AND GALLERY**  
**645 No. 14th St**  
**ARTWALK**  
**Painting Classes — 259-2021**

**ATTACH ME !**

ATTACH ME TO THE BACK OF A PAINTING

Artist \_\_\_\_\_  
 Title \_\_\_\_\_  
 \_\_\_\_\_  
 Medium:  Oil/acrylic  water media  
 graphics  drawing/pastel  
 photography  mixed media  
 artisan crafts  Other  
 Price \_\_\_\_\_ com. \_\_\_\_\_  
 Phone \_\_\_\_\_

**ATTACH ME !**

ATTACH ME TO THE BACK OF A PAINTING

Artist \_\_\_\_\_  
 Title \_\_\_\_\_  
 \_\_\_\_\_  
 Medium:  Oil/acrylic  water media  
 graphics  drawing/pastel  
 photography  mixed media  
 artisan crafts  Other  
 Price \_\_\_\_\_ com. \_\_\_\_\_  
 Phone \_\_\_\_\_

**ART CLASSES**  
**OCTOBER -**  
**WATERCOLOR/WATERMEDIA**  
 Barbizan Art Center — Linda Duncan  
 14 North 29th St. Suite 101  
 Thursday—afternoon —1:00 to —3:30  
 Friday mornings—9:00 to —11:00  
 Wed eve - 6 to 8:30  
 Call for time & more information - 208-3064

---

**WATERCOLOR**  
Lance Johnson  
 Sunrise Studio & Gallery  
 2923 Montana Ave  
 Mon. 1:30 to 4:30  
 Tue. - 5 to 8  
 Sat. - 10 to 1  
 Gallery—294-0199 - Home 245-6199

---

**ART CLASSES**  
 Hobby Lobby — 652-1987  
 Dick Moulden  
 Jeannie Southworth  
 Call for Times

---

**PAINTING**  
Les Lindell  
 Q's Art Shop — 6th Ave. North  
 Tuesday -5:45 to 8:45 - \$15 -  
 Wednesday—5:45 to 8:45 - \$15  
 Phone 248-1102 for more information

**PUBLIC ART INSTALLATION—POCATELLO ZOO**  
**GRIZZLY BEAR EXHIBIT ENTRANCE**  
 Call for Proposals  
 Deadline October 15, 2010

The Pocatello Art Council (PAC) in Idaho is seeking proposals from Northwest sculpture artists (Idaho, Montana, Wyoming, Washington, Oregon and Utah) for a public art installation to be located in the entranceway of the new Grizzly Bear Exhibit at the Pocatello Zoo in Southeast Idaho. Deadline is October 15, 2010 (Note: This is an extension of an earlier May 15 deadline).  
 For proposal instructions, go to:  
[http://www.pocatelloarts.org/call\\_pocatellozoo.shtml](http://www.pocatelloarts.org/call_pocatellozoo.shtml).

Contact our PAC representative at: [proposals@pocatelloarts.org](mailto:proposals@pocatelloarts.org)

**LIFE DRAWING**  
*Thursday evenings from 5:45 to 7:50 in the education room. Bring your drawing materials and enjoy an evening with other artists.*  
 Cost: \$5 to pay the model.  
 \$2 Entry fee for non members -  
 YAM Education Room



# AREA galleries and calendar.....

## DMG

Division Mortgage Group at 1320 Division St open 9 to 5 Monday through Friday. Over 100 works by local artist William Crain.... Many sculptures will also be on exhibit.



## LION AND LAMB GALLERY 820 Division Ave.

Regular gallery hours are 9-5 Monday through Friday, and during Artwalk hours.

The gallery can be contacted at stroebefam@aol.com or by calling 406-248-8873.

## Cody Country Art League

Cody has classes in Pastel, Drawing, Watercolors, Photography, decorative Furniture Painting, Woodcarving, and Pottery. Classes run for 6 weeks, cost is around \$120. If you are interested contact the Art League at 1-307-587-3597

Instructors are: Pat Schermerhorn, Pastels  
Melody Christensen, Drawing  
Shirley Barhaug, Watercolors  
Jaime Penuel, Photography  
Shirley Barhaug, Decorative Furniture Painting  
Woodcarving, Dennis Barhaug,  
Steve Schrepferman, Pottery

## CARBON COUNTY ARTS GUILD - 446-1370

Red Lodge, MT - Exec. Dir. Deborah Kline  
www.carboncountydepotgallery.org

## CODY COUNTRY ART LEAGUE -

1-307-587-3597 Cody, Wyoming  
Website: www.codyart.vcn.com

## CUSTER COUNTY ART & HERITAGE CENTER

1- 406 -234-0635 Miles City, MT ccaric@midrivers.com

## CTA Atrium Gallery -

13 North 23rd Street

## DMG—Gallery

1320 Division St

## FRAME HUT

1430 Grand Avenue 245-9728

## LION AND LAMB GALLERY

820 Division Ave...- 248-8873

## MONTANA STATE UNIVERSITY - BILLINGS - 657-2324

Northcutt Steele Gallery (Now Open)

## Q's GALLERY AND ART SUPPLY

1511 6TH AVE. No.

## RIMROCK ART AND FRAME

1070 S. 24th Street, Billings, 652-3455

This fine frame shop offers 25% off the total order for artists framing their own work.

## SANDSTONE GALLERY - 256-5837 -

This is a cooperative gallery with 20 local artists.  
2913 2nd Ave North

Director Leo Olson, Co-Director Sue Hammersmark

## SUNRISE STUDIO & GALLERY - Lance Johnson

2923 Montana - 294-0199

## TOUCAN GALLERY 2505 Montana Ave. - 252-0122

## TWO RIVERS GALLERY

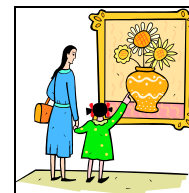
226 McLeod St-PO Box 225-Big Timber MT 59011

## WHITEBIRD GALLERY

16 S. Woodard- Absarokee, Mt - 328-7777

Laura Lee Neva, owner—cell 406-322-4444

## YELLOWSTONE ART MUSEUM - 256-6804



Please enroll me as a member of the  
**BILLINGS ARTS ASSOCIATION**

My strongest interest is in:  photography  oil/acrylic  
watercolor  graphics/printmaking  drawing/pastel   
sculpture  mixed media  artisan crafts (pottery, fiber,  
jewelry, etc.) other \_\_\_\_\_

Name: \_\_\_\_\_

Address: \_\_\_\_\_

City \_\_\_\_\_ State: \_\_\_\_\_ Zip \_\_\_\_\_

Telephone: \_\_\_\_\_ E-Mail: \_\_\_\_\_

**Dues: Individual \$20 - Family \$25 per year  
Student \$15**

- Make your checks payable to the Billings Arts Association and send with this application to the BAA Treasurer:
- Eva Morganthaler—4200 Night Hawk Road
- Billings Montana 59106 - 259-4395

## REMEMBER..

Dues can be paid any time to Eva Morganthaler treasure. Check the month your dues are due on the label of your newsletter.

**\*\*If your e-mail changes PLEASE let Eva know your NEW one, to keep the list up to date...Information about events between newsletters... is sent by e-mail**



# Billings Arts Association

Or Current Resident

\*Check label for date dues are due!

## Billings Arts Association Officers 2010



### Leadership Committee

Events Coordinators	Lana Bittner	147 Norris Court 59105	259-7470	glnorris@imt.net
	Karen Mc Bride	512 Sahara Drive 59105	656-4579	mcbridemcbride@bresnan.net
Treasurer	Eva Morganthaler	4200 Night Hawk Road 06	259-4395	femorgan@msn.com
Newsletter Editor	Sue Hammersmark	4520 Palisades Park	656-7529	shammersmark@bresnan.net
Historian	Janet Jones	1003 Victory Ave	259-4884	
Publicity	Linda Duncan	2616 Howard 59102	655-4846	lyndad@bresnan.net
New Member	Gerri Rowe	1212 Dublin	252-6261	
New Member	Dan & Becky Burns	405 4th Ave-Laurel	628-7223	
New Member	Mary Knapp	2377 Road 16 So.—Ballantine	967-3708	
New Member	Jeanette Magstadt	3738 Lava Cr	656-0794	
Advisor	Madelein Bladow	2423 Spruce, 59101	256-6124	DBlad1@aol.com
Grant Coordinator	Madelein Bladow			
Calling Chair	Sue LaFountain	4617 Simpson 59101	245-5946	
Calling	Lana Bittner			
	Mary Knapp	2377 Road 16 So	967-3708	knap@nemont.net
	Lou Taylor	1106 Poly 59102	259-6400	